


>>>

Advisory Team
May 20th, 2013




>>>

OEP Conference Recap



>>>

Outreach Update



>>>

Blood Drive

- » Thursday May 2, 2013
- » 27 Participants
- » Liked:
 - » Sense of community, friendliness of people, feeling safe, important of recreation to the essence of our region, small business, local economy
- » Dislikes/Needs Improvement:
 - » Transportation, encouraging biking and walking alternatives, return to traditional education, education improvements, more funding for educations, improving county and city politics



>


What We Heard



>

SAU Outreach

- » Thursday April 30, 2013-May 14, 2013
- » 13 Participants
- » Liked: The amount of green space available in our region, the variety of recreation choices, access to the coast, city, mountains, and lakes, and the natural beauty overall, likes the community, thinks it is important to the region, and that people are friendly in our region. Believe education is an asset to our region
- » Dislikes/Needs Improvement: More recreational activities, more public access to Lakes, conserve forests, rural community comes with downsides (transportation), more youth recreational opportunities, more outdoor events, better boat access, more commercial business, more small/local business.



>

Future Outreach

Armed Forces Day Liac Mall Rochester, NH

18 Apr 2013 10:55 AM

ARMED FORCES DAY SALUTE TO OUR TROOPS

Join Us For Our First Armed Forces Day on May 18 At The Liac Mall

The Liac Mall & the Rochester Veterans Council are putting together a Salute To Our Troops to honor all of our veterans & military personnel who have dedicated themselves to us and our country. There will be military vehicles and equipment on display, Entertainment by local performers and demonstrations by many organizations that help our troops and vets will go throughout the day. The event will be held from 9:30 am to 4 pm. We will have numerous organizations setup to give our veterans and military troops valuable information on services and jobs available to them. The opening ceremony will be at 9:30 am with the VVC Bagpipe procession with Colours, a parade of Vets and the National Anthem sung by Trinity StreetChoir. The event will be held inside and outside of the mall with the larger military vehicles displayed outside. This celebration is a great family event both young and old will enjoy. Please watch for more details coming soon.



TBD



Advisory Team Member Recruitment



Equity Checklist



Chapter Content Outlines

Technical Advisory Team Work



A Vision for the Strafford Region

Our Past. Our Present. Our Future.



Process

- » Master Plan Matrix
- » Staff Analysis of Assigned Matrix Section
- » Outreach Analysis
- » Visioning
- » Annual Meeting



Staff Analysis

Division	Internship	Community Outreach Office	Health, Safety & Environmental	Water Resources Division	Public Works

Outreach

Step 1: Highlighted key terms/important concepts and phrases

Step 2: Created codes based on key terms and calculated frequency of statements involving those themes

Code	Code-Description	Frequency	Percentage
1	Recreational Opportunities	117	71
2	Place/Access-proximity to varying areas	160	2
3	Taxes	29	42
4	Sanitation Service and Clean Streets	5	19
5	Presence of local business(need more)	27	17
6	Presence of business	53	21
7	Downtown-oriented communities	29	30
8	Local events/activities	52	48
9	Education/Schools(more affordable educ, life training, funding for education, options for educ, educ for disabled, updated curriculum)	37	39
10	Rural environment/small communities	60	3

Step 3: Create three to five vision statements based on analysis

Vision Statement 1:
To be recognized as a progressive and innovative destination area with a focus on building sustainable communities through the conservation of forest and agricultural lands, expansion of transportation options, preservation of water resources and wildlife habitats. Managing development using smart growth principles, increasing energy conservation with the use of alternative fuels, and implementing energy efficient buildings will create economically viable and vibrant communities, while preserving an environmental quality of life.

Vision Statement 2:
As the region plans for the future, addressing energy challenges and building sustainable communities by encouraging more transportation options, increasing energy conservation, supporting conservation efforts, preservation of water resources and wildlife habitats, and the promotion of smart growth principles will be an important emphasis in order to create efficient and vibrant communities.

Vision Statement 3:
Our region will encourage the expansion of transportation alternatives, conservation efforts, increasing energy conservation, promoting smart growth principles and sustainable development, and the promotion of water resources and wildlife habitats in order to create economically viable and vibrant communities.

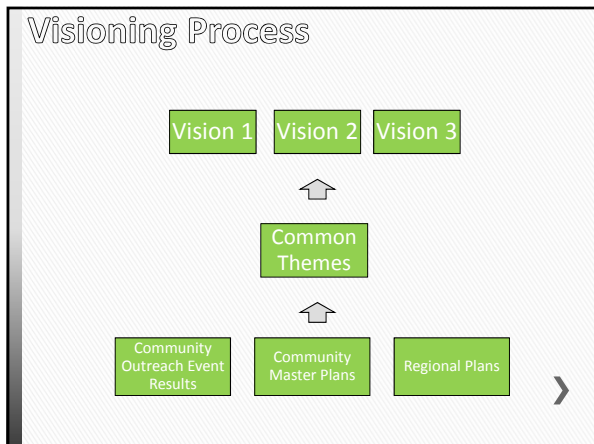
Outreach

- » 15 Events
- » 915 participants
- » Over 2,000 comments
- » Ongoing efforts

Analysis of Outreach

Sort of Public Outreach Comments

Code Description	Likes	Dislikes/Needs Improvement	Frequency
1. Recreational Opportunities	117	71	188
2. Place/Access-proximity to varying areas	160	2	162
3. Taxes	29	42	71
4. Sanitation Service and Clean Streets	5	19	24
5. Presence of local business(need more)	27	17	44
6. Presence of business	53	21	74
7. Downtown-oriented communities	29	30	59
8. Local events/activities	52	48	100
9. Education/Schools(more affordable educ, life training, funding for education, options for educ, educ for disabled, updated curriculum)	37	39	76
10. Rural environment/small communities	60	3	63



Overall Vision

Option 1:
The Strafford region will be distinguished by its high quality of life -- expansion of vibrant downtown communities while maintaining its forested landscape and farms, strengthening the local economy for everyone's benefit, and striving for excellence in education, health, transportation, and recreation opportunities.

Option 2:
The Strafford region is defined by flourishing communities amongst lakes, forests and coastal rivers, historic mill towns now home to locally based commerce and manufacturing, abundant transportation and recreation opportunities

Option 3:
A vibrant and thriving region located between the Lakes and the Seacoast, where community is embraced, education is valued, commerce is promoted, and the environment and recreation opportunities are treasured.

- Community**
 - Involved: The citizens engage in robust civic and cultural participation
 - Healthy: Citizens of all ages participate in health and wellness activities
 - Connected: Create a network of caring/friendly/open citizens that enhance the quality of life
- Government**
 - Responsive: Governments and school districts operate in an open and accountable manner
 - Effective: Government and school districts strive for organizational excellence and efficiencies within the means of citizens
 - Collaborative: Government and school districts foster partnerships in pursuit of common objectives
- Education**
 - Teaching: Options for affordable, quality schooling are essential for long term success
 - Learning: Actively promotes early childhood education and life-long learning
 - Exploring: Quality programs allowing self-discovery and mastery in the arts, science, sports, and technology
- Business and Economy**
 - Local: Values services and businesses that support the local economy
 - Expansive: Grow businesses and non-profits that expand the economic base throughout the region
 - Responsible: Maintain sustainable business practices and strong community connections
- Housing**
 - Inclusive: Welcoming of all residents
 - Affordable: Provide a variety of housing options for all income levels
 - Harmonious: Allow residential development while preserving the natural and historic aspects of the region
- Transportation**
 - Multi-modal: Provide multiple options for car, bike, bus, freight, air, and pedestrian
 - Safe: Traveling without undue concern for personal safety
 - Accessible: Expansive network and services allowing for ease of travel
- Public Health and Safety**
 - Active: Encouraging active living to support physical and mental health
 - Protected: Encourages public safety through crime and fire prevention, law enforcement, and emergency response
 - Prepared: Strategies to plan for home and community responses to emergency situations
- Environment/Recreation**
 - Natural: Conserves the region's natural and water resources for sustainable uses and recreational opportunities
 - Proximity: Access to lakes, mountains, river, trails, forests, the ocean and bay, parks, and wildlife sanctuaries for outdoor activities
 - Aesthetics: Enhancement of the scenic vistas

- Community**
 - Involved: The citizens engage in robust civic and cultural participation
 - Healthy: Citizens of all ages participate in health and wellness activities
 - Connected: Create a network of caring/friendly/open citizens that enhance the quality of life
- Government**
 - Responsive: Governments and school districts operate in an open and accountable manner
 - Effective: Government and school districts strive for organizational excellence and efficiencies within the means of citizens
 - Collaborative: Government and school districts foster partnerships in pursuit of common objectives
- Education**
 - Teaching: Options for affordable, quality schooling are essential for long term success
 - Learning: Actively promotes early childhood education and life-long learning
 - Exploring: Quality programs allowing self-discovery and mastery in the arts, science, sports, and technology
- Business and Economy**
 - Local: Values services and businesses that support the local economy
 - Expansive: Grow businesses and non-profits that expand the economic base throughout the region
 - Responsible: Maintain sustainable business practices and strong community connections

- Housing**
 - Inclusive: Welcoming of all residents
 - Affordable: Provide a variety of housing options for all income levels
 - Harmonious: Allow residential development while preserving the natural and historic aspects of the region
- Transportation**
 - Multi-modal: Provide multiple options for car, bike, bus, freight, air, and pedestrian
 - Safe: Traveling without undue concern for personal safety
 - Accessible: Expansive network and services allowing for ease of travel
- Public Health and Safety**
 - Active: Encouraging active living to support physical and mental health
 - Protected: Encourages public safety through crime and fire prevention, law enforcement, and emergency response
 - Prepared: Strategies to plan for home and community responses to emergency situations
- Environment/Recreation**
 - Natural: Conserves the region's natural and water resources for sustainable uses and recreational opportunities
 - Proximity: Access to lakes, mountains, river, trails, forests, the ocean and bay, parks, and wildlife sanctuaries for outdoor activities
 - Aesthetics: Enhancement of the scenic vistas

Transportation

Option 1:
As the Strafford region plans for future transportation options it is important to fully maintain the capacity and efficiency of existing facilities and services while promoting safer future networks, and maintaining a multi-modal approach to transportation that emphasizes livability and sustainability through an environmentally, cultural, and financially conscious transportation network.

Option 2:
The Strafford region will be known for its approach to the development of a safe, efficient, accessible, coordinated, and diverse transportation network that provides for the cost-effective movement of people and goods within the region while being conscious of our scenic viewsheds and rural heritage.

Option 3:
The Strafford region will encourage the planning of a safe, coordinated, and accessible road network with a variety of transportation choices that creates efficient and economically sound options serving all communities.

Housing/FHEA

Option 1:
As the region plans for the future, addressing our housing choices, diverse population, aging infrastructure, and employment outlook will be critical in creating efficient and resilient communities.

Option 2:
The Strafford region will be known for its approach to effective and practical housing choices that provide a variety of housing opportunities for citizens of all ages close to employment centers and compatible with neighboring communities.

Economic Development

Derived from CEDS Document

Engage in collaborative networks to sustain and grow the region's economic vitality and median income through business development, job creation, enhancement of the tax base, educational excellence, and cultural and civic diversity, all within a historic place rich in recreational opportunity and natural beauty.

Climate Change Impact Assessment

More Information Coming In June



Water Infrastructure

Option 1:

The continued protection of and investment in drinking water, wastewater, and stormwater systems will be addressed by communities in the Strafford region in order to support the management and future water supply demand of a growing population. The region will act as stewards for municipal and regional water supplies located within the Great Bay coastal watershed and surrounding landscape.

Option 2:

The Strafford region seeks to protect and maintain resilient drinking water, stormwater, and wastewater infrastructure through investments and operations that provide clean and safe water as an integral part of both public health and safety. The region will support the protection of the important natural, cultural, and recreational resources that define our region.

Option 3:

The continued protection of and investment in drinking water, wastewater, and stormwater systems will be addressed by communities in the Strafford region in order to ensure public health and safety, while supporting the management of future municipal and regional water supplies. The region will act as stewards in preserving the important natural, cultural, and recreational resources that define the Great Bay coastal watershed and surrounding landscape.



Environment

Option 1:

The region's residents and visitors enjoy a healthy, rich tradition of interaction with the natural environment, through the successful balance of social and economic needs and environmental protection. The scenic beauty, rural landscapes, water quality, and recreational opportunities will continue to support the state and region's tourist economy and quality of life for its residents.

Option 2:

The connection between our socioeconomic needs and desire to promote environmental protection is recognized by the region's communities. The region's scenic vistas, wildlife, rural landscapes and opportunities for recreation have, and will continue to support the state and region's tourist economy, residential quality of life, and resiliency as we move into the future.



Energy Efficiency and Green Building

Option 1:

As the Strafford region continues to support economically viable and vibrant communities, there is a growing need to stress the importance of energy use vulnerabilities and an increasing reliance on fossil fuels. In order to be recognized as being resourceful and resilient, communities will place an emphasis on addressing energy challenges and promoting the implementation of energy efficient buildings.

Option 2:

In order to be recognized as being resourceful and resilient, communities will place an emphasis on addressing energy challenges and promoting the implementation of energy efficient buildings.

