


Meeting #3



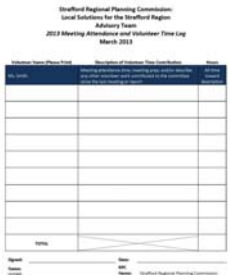
**Local Solutions for the Strafford Region:  
Advisory Team**

03/28/2013

## Draft Minutes Review

**Match Form How-To:**


1. Activity Types
2. Hours Determination
3. Sign
4. Monthly Digital/Hard Copy



## Metro Plan Coordination


**Metropolitan Transportation Plan Coordination Efforts**

- February Metropolitan Transportation Plan/Local Solutions for the Strafford Region Staff Coordination Meeting
  - Projects should work in parallel of each other
  - Work of Data Team (Core Metric List) key in both efforts



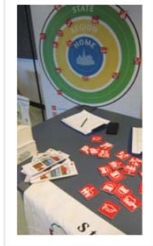
## Recent Outreach

UNH Memorial Union Building, Dover Communities of Place, Coast Listening Boxes & Winter Farmer's Market #2

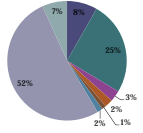


## UNH Memorial Union Building

- Date: February 5-7, 2013
- Participants: 200 students



### Likes

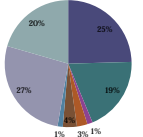


Category	Percentage
Business/Economy	25%
Community	7%
Education	8%
Government	3%
Housing	2%
Public Safety	2%
Recreation/Environment	32%
Transportation	1%

#### LIKES

- Proximity to Boston, but also to the mountains, lakes, beaches, and forests
- Recreational opportunities
- The openness and natural beauty of the state
- The sense of community in Durham.
- Students find UNH to have a good atmosphere with cultural diversity
- Durham local shops create a better sense of community
- Scenery of the region

### Dislikes/Needs Improvement




Category	Percentage
Business/Economy	25%
Community	1%
Education	3%
Government	4%
Housing	19%
Public Safety	27%
Recreation/Environment	20%
Transportation	1%

#### DISLIKES/NEEDS IMPROVEMENT

- Improvement of public transportation
- Bus routes that expand to areas outside the region
- Better snow removal on campus
- Students request more small and local business
- Complaints concerning the types of stores in downtown Durham
- More venues for music and the arts
- Community concerns

## GSF Communities of Place Event





Date: March 5, 2013  
 Participants: ~30  
 Location: Home Street Elementary School in Dover


#### WHAT WE HEARD

- Concerns with jobs and proper training for jobs
- More state support for education
- More workforce housing
- Concern with high property taxes
- A need for a stronger connection between planning and community members
- Public transportation needs
- Sustainable infrastructure to help grow the economy

## COAST Listening Boxes

Front



Back

- Ten listening boxes on the COAST
- New comment card
- Riding the COAST

## What We Heard



#### LIKES

- Good place to raise a family
- Feels safe
- Community
- Scenery
- Public transportation
- No sales tax
- COAST bus
- Low crime rate
- Low rent
- Plenty to do

#### DISLIKES/NEEDS IMPROVEMENT

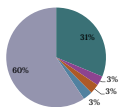
- Better public transportation
- More entertainment/events
- More businesses
- Increase walkability of towns
- More activities for children
- More gardens and parks
- More community farms
- More city rails/recreation

## Winter Farmer's Market #2



- March 23, 2013
- 27 participants

### Likes

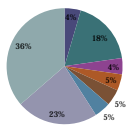


Category	Percentage
Business/Economy	31%
Community	60%
Education	3%
Government	3%
Housing	5%
Public Safety	3%
Recreation/Environmental	3%
Transportation	3%

**LIKES**

- Proximity to oceans, mountains, and Boston
- The open land
- The community and community activities
- Recreation such as ponds for kayaking
- Low crime rate
- Historic street scopes and beautiful villages
- Good mix of urban and rural
- No income tax
- Aesthetically pleasing

### Dislikes/ Needs Improvement






Category	Percentage
Business/Economy	4%
Community	36%
Education	18%
Government	4%
Housing	5%
Public Safety	5%
Recreation/Environmental	23%
Transportation	5%

**DISLIKES/NEEDS IMPROVEMENT**

- Farther reaching transportation
- Less development in that it affects the water supply, we need to conserve land
- Less traffic
- More downtown revitalization
- Better senior transportation and senior homes closer to business
- Cheaper cost of living
- Better education system
- More bike trails
- More railroad commuting
- More agricultural commissions and easier land access for farmers

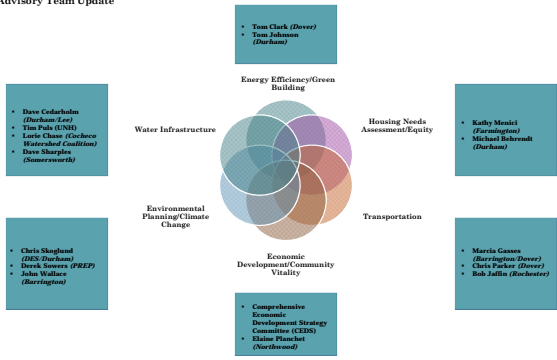
## Future Outreach

- Event scheduled with Great Bay Half Marathon
- SRPC has also contacted the Dover Children's Museum, and Catapult Young Professional of the Seacoast to express interest in participating in sponsored events
- Goal: Two events/month

## Technical Advisory Team Progress

### Regional Technical Advisory Team Update



**Energy Efficiency/Green Building**

- Tom Clark (Dover)
- Tom Johnson (Durham)

**Water Infrastructure**

- Dave Colarkholm (Durham Zoo)
- Tim Pals (USND)
- Leslie Chase (Exeter Water/Wastewater Solutions)
- Dave Sharples (Concord)

**Environmental Planning/Climate Change**

- Chris Shogland (DPS/Durham)
- Derek Somers (PREP)
- John Wallace (Barrington)

**Economic Development/Community Vitality**

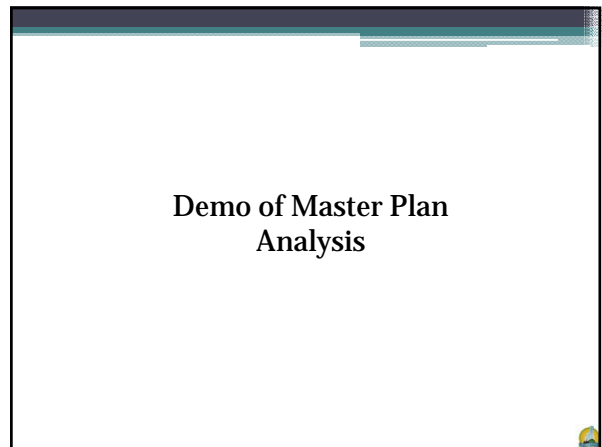
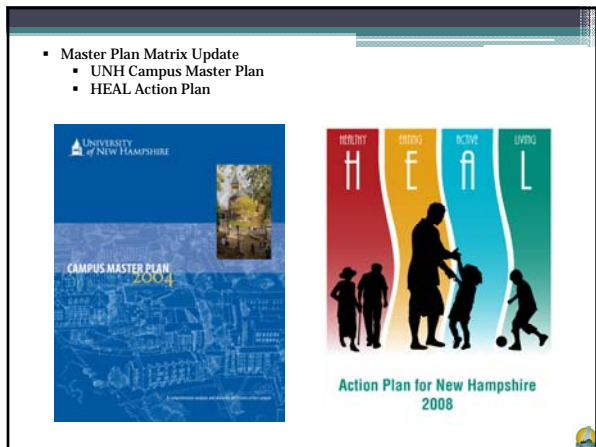
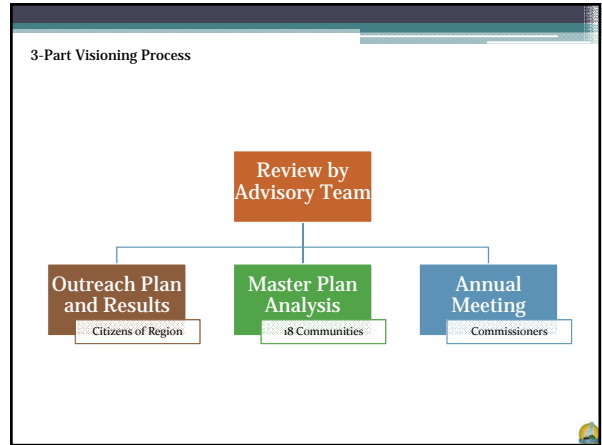
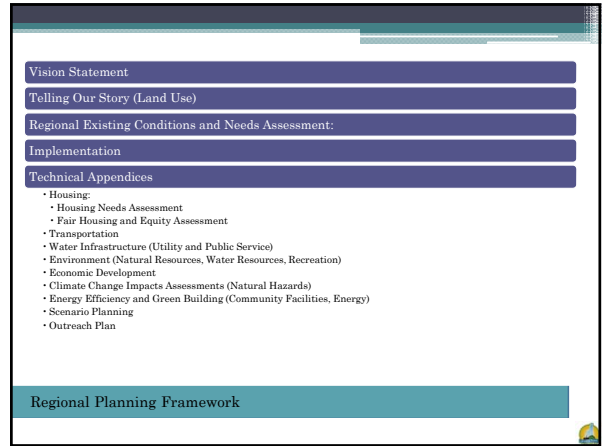
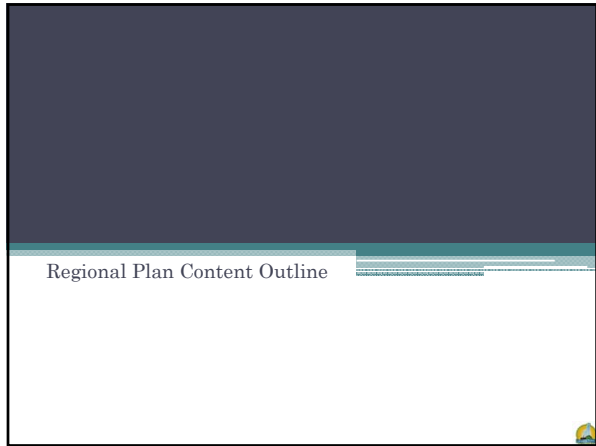
- Comprehensive Economic Development Strategy Committee (CEDS)
- Elaine Planchet (Northwood)

**Housing Needs Assessment/Equity**

- Kathy Mendel (Farmington)
- Michael Beharrell (Durham)

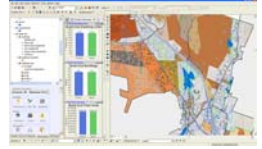


**Transportation**

- Marcia Gassen (Barrington/Dover)
- Chris Parker (Dover)
- Bob Jaffe (Exeter)


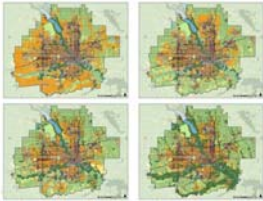


Scenario Planning Update

- Metro Plan and Granite State Future Scenario Planning
- In Process of Selecting/Researching Tools



Scenario Planning is defined as:  
A strategic planning method that organizations use to make flexible long-term plans based on generating a number of "what if" situations and then options on how they might respond to those situations.



NH OEP Conference

*19<sup>th</sup> Annual Spring  
Planning and Zoning Conference*

Saturday, May 11, 2013  
The Radisson Hotel  
Manchester, New Hampshire

Online registration opens March 21, 2013 at  
[www.nh.gov/oep](http://www.nh.gov/oep)



Adjournment