



# Regional Transportation Workshop



February 8, 2013

NRPC Offices, Merrimack, N.H.

## Overview

The Transportation Workshop is one of the many opportunities local officials, residents and businesses will have throughout 2013 to provide input for NRPC's Regional Metropolitan Transportation Plan (MTP). The discussion topics for the workshop will focus on the draft goals of mobility, quality of life, system sustainability and implementation developed by the NRPC Technical Advisory Committee (TTAC) in the Spring of 2012 (see last page). Input from this event will be shared with the Transportation Subcommittee members as they guide the development of transportation planning documents and identify regional implementation strategies. The overall goal is to develop a long-term vision for transportation in the region.

## Break-Out Groups

Each group will discuss the following for mobility, quality of life and system sustainability:

- Existing strengths in the region,
- Issues or challenges facing the region, and
- Regional needs.

For the purposes of this discussion, the categories are defined as:

### **Mobility -**

Refers to the movement of people and goods from one place to another, and is often evaluated based on the time and costs required for that travel. Accessibility is the ease at which desired goods, services, activities and destinations can be reached. Improved mobility and accessibility contribute to the development of a metropolitan area's economic base by quickly and efficiently moving people and goods and expanding choices of where to work, live, shop, and recreate.

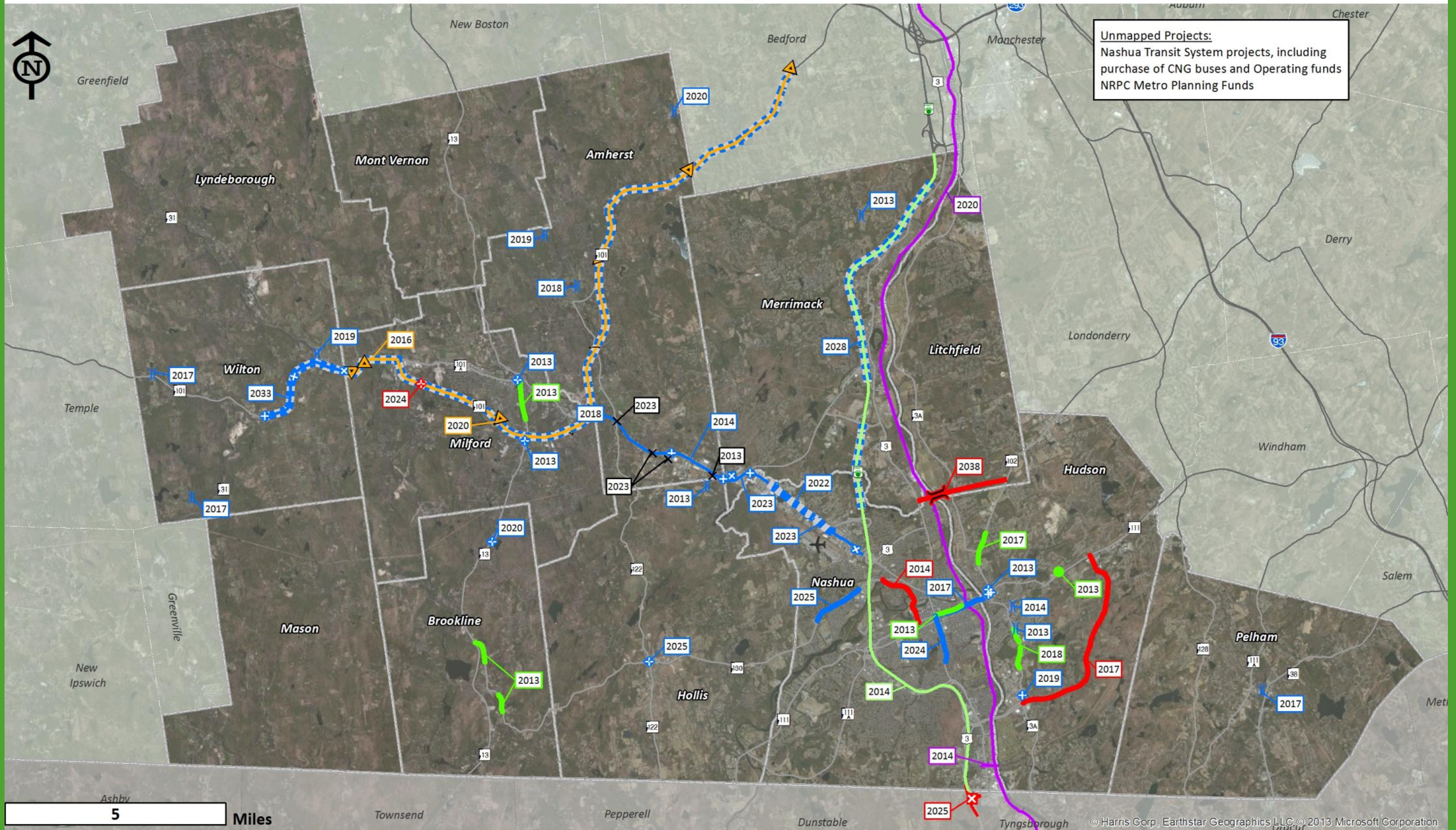
### **Quality of Life -**

Investments in the transportation system that reserve and minimize impact to the natural environment, improve air quality, and promote active lifestyles and encourage economic vitality.

### **System Sustainability -**

The safety and reliability of the existing transportation system is adequately enhanced and maintained by a long-term sustainable revenue source. Improvement projects should offset the need for repair or replacement of a facility or capital equipment through modernization, preventive maintenance, or improved monitoring and evaluation. New facilities or services should not only have long expected service lives but also extend the life of interrelated facilities.

# Projects listed in the Adopted 2013 - 2040 MTP



**Unmapped Projects:**  
 Nashua Transit System projects, including purchase of CNG buses and Operating funds  
 NRPC Metro Planning Funds

5 Miles

© Harris Corp, Earthstar Geographics LLC, © 2013 Microsoft Corporation

#### =  
Last Construction Year

- |                              |                           |                            |                |                                    |
|------------------------------|---------------------------|----------------------------|----------------|------------------------------------|
| New Road Construction        | Bridge Improvements       | Safety Improvements        | Park 'n Ride   | Enhancements/Pedestrian Facilities |
| New Bridge Construction      | Intersection Improvements | Rail Crossing Improvements | Passenger Rail | Travel Demand Mitigation           |
| New Interchange Construction | Road Reconstruction       | Boire Field                |                |                                    |
|                              | Road Widening             |                            |                |                                    |





# Draft Vision and Goals

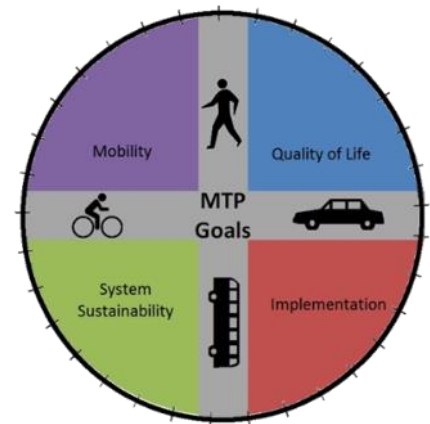


## Regional Transportation Workshop

In the spring of 2012, the NRPC Technical Transportation Advisory Committee (TTAC) drafted a vision to guide the development of the Nashua Region Metropolitan Transportation Plan (MTP):

*The Nashua region has a comprehensive and reliable multi-modal transportation system that enables universal access for all travelers, including disabled, youth, and seniors, to all points within and beyond the region. Our transportation system enables a highly mobile community and promotes economic growth, public health, and enhances the natural environment. The Transportation system is adaptable to changes in demographics, economic conditions and energy related forces. Sufficient funding supports the operations maintenance and expansion of our transportation infrastructure to continuously meet the needs of the region.*

TTAC also identified the following goals to support and advance the development of a transportation system that contributes to the region's mobility, quality of life, system sustainability, and continued project implementation, as directed by the vision.



### **Mobility**

- Improve the availability of transportation options for people and goods.
- Support travel efficiency measures and system enhancements targeted at congestion reduction and management.
- Assure all communities are provided access to the regional transportation system and planning process.

### **Quality of Life**

- Preserve and enhance the natural environment, improve air quality, and promote active lifestyles.
- Encourage livable communities which support sustainability and economic vitality.

### **System Sustainability**

- Ensure adequate maintenance and enhance the safety and reliability of the existing transportation system.
- Pursue long-term sustainable revenue sources to address regional transportation system needs.

### **Implementation**

- Provide for timely project planning and implementation.
- Develop cost-effective projects and programs aimed at reducing the costs associated with constructing, operating, and maintaining the regional transportation system.