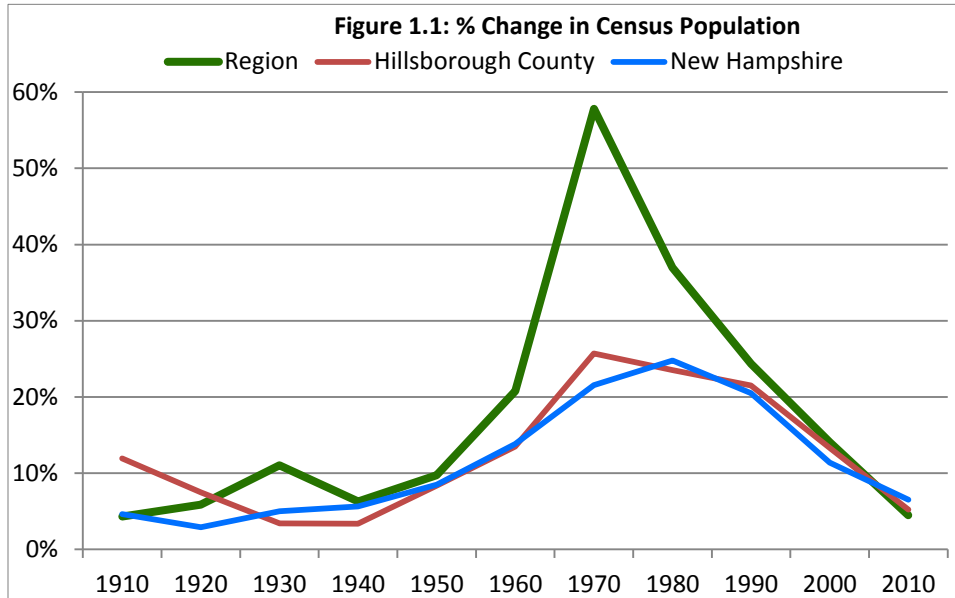




## Building a Comprehensive Regional Plan

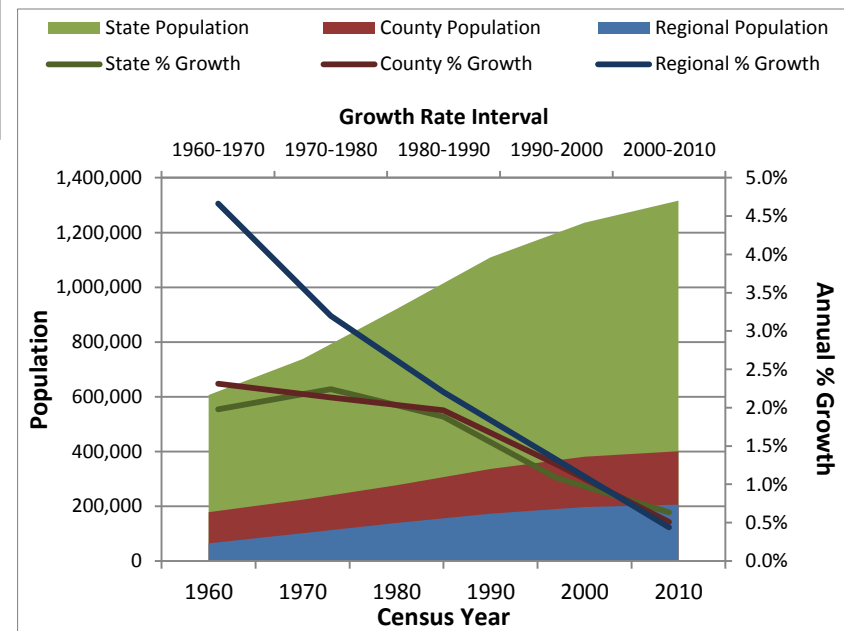


# Who We Are: Population



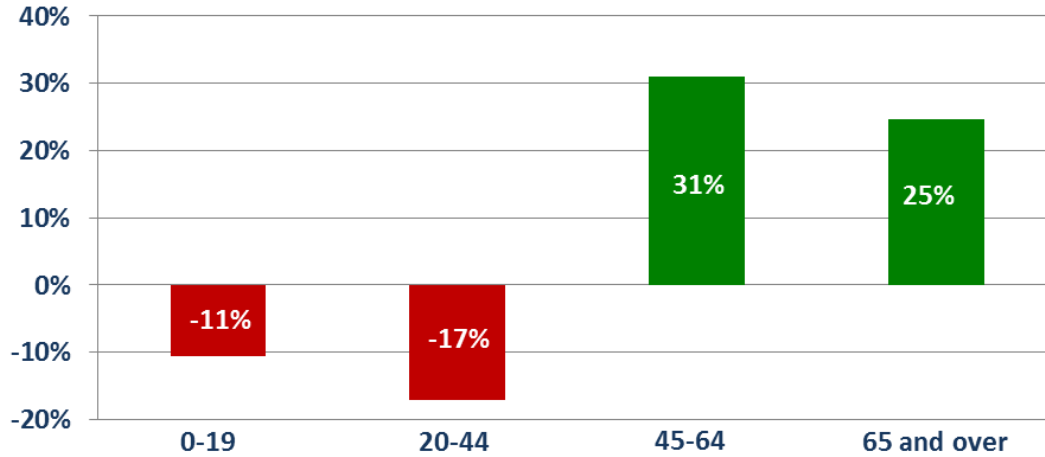
*For the first time in nearly 100 years, the 2010 Census showed a lower percent growth in the Nashua Region than in Hillsborough County or the State.*

*Regional population over the last decade has become flat at less than 0.5% growth between 2000 and 2010.*



# Who We Are: Population

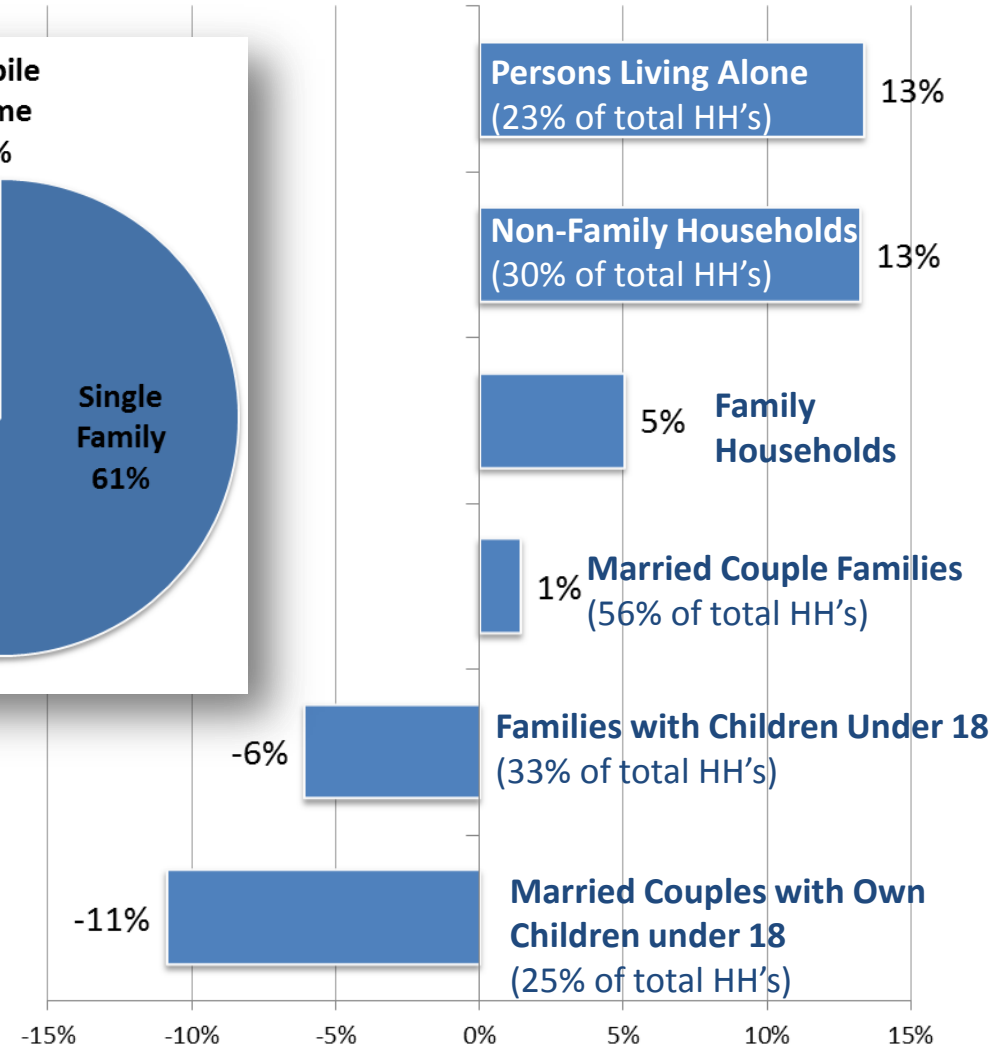
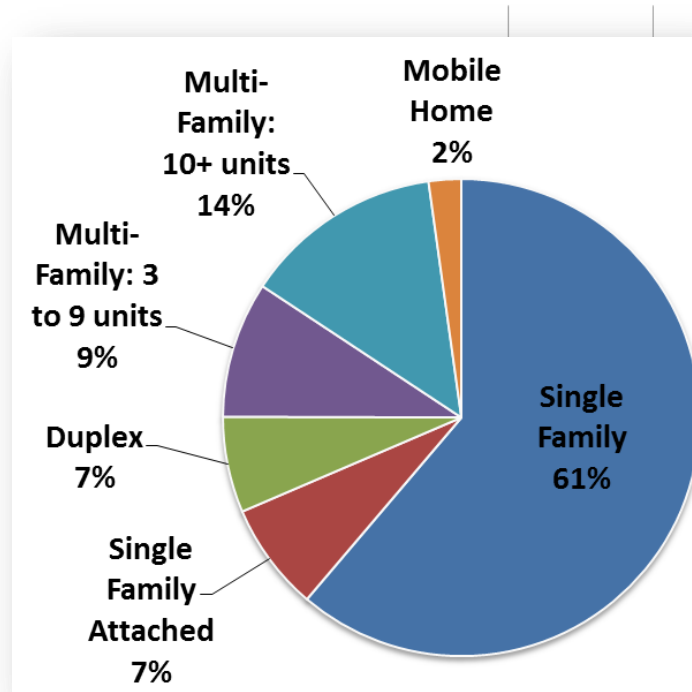
Percent Change of Population Mix  
Nashua Region, 2000-2010





# Who We Are: Households

Traditional Households (HH's) are on the decline



# Who We Are: Transportation

We like our cars.



83.3% of Nashua Region residents commute alone by car.

Or do we....



Need for more transportation options consistently noted by residents





# Who We Are: Commuting

1

in

4

Residents of the Nashua region  
commute into Massachusetts





# Who We Are: Economic Vitality

Our kids are wicked smaht. We have high incomes.



Second highest average SAT scores after Washington State

(Source: The College Board, 2010, 2011)



We have high incomes.  
Top 10 percent nationally

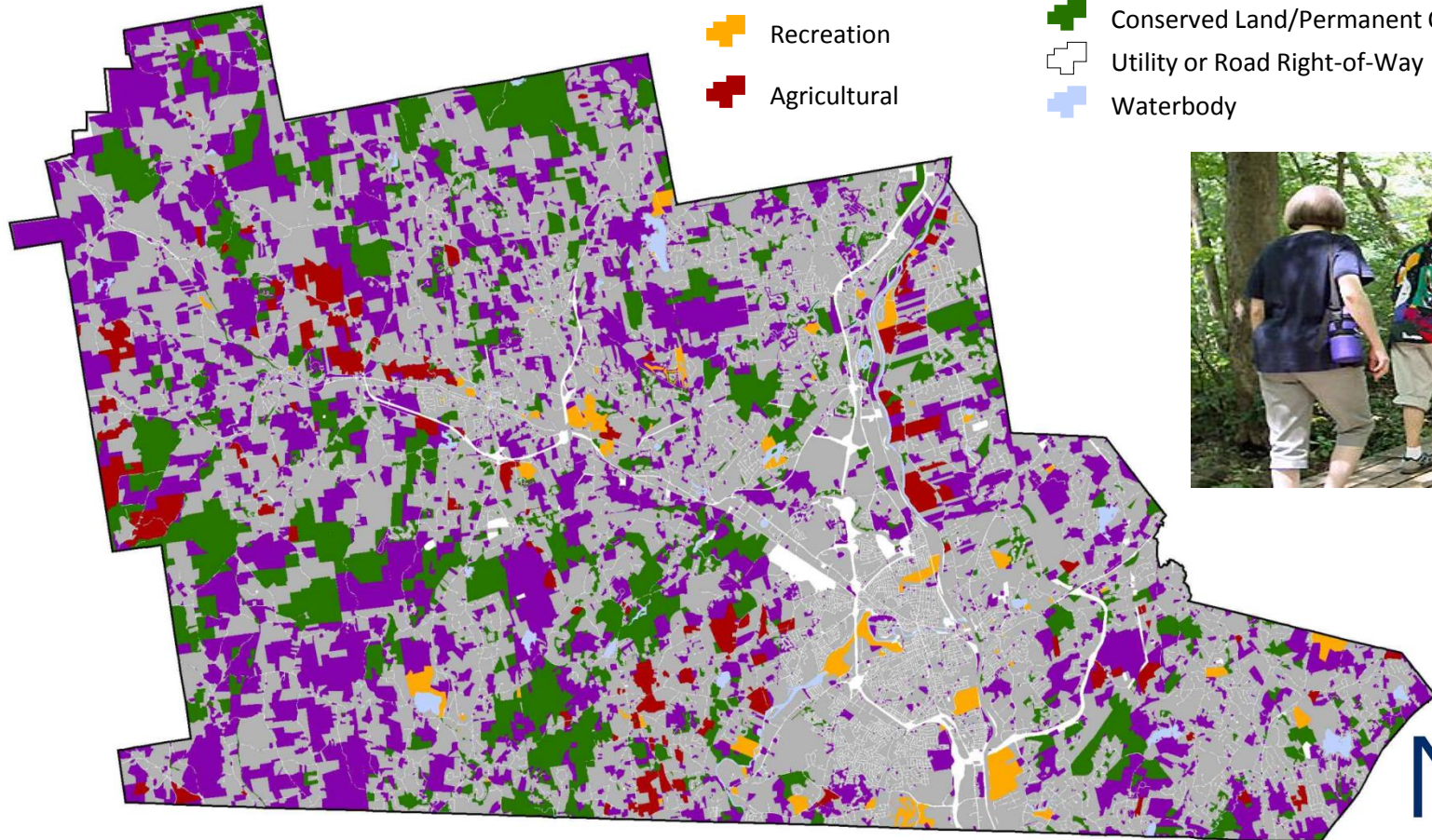
(Source: Department of Housing and Urban Development, 2012)



# Who We Are: Environment

We like our open spaces and recreation options.

- Undeveloped
- Recreation
- Agricultural
- Residential, Commercial, Industrial
- Conserved Land/Permanent Open Space
- Utility or Road Right-of-Way
- Waterbody



NRPC



# What We've Heard: Housing



“factor transportation into housing costs”



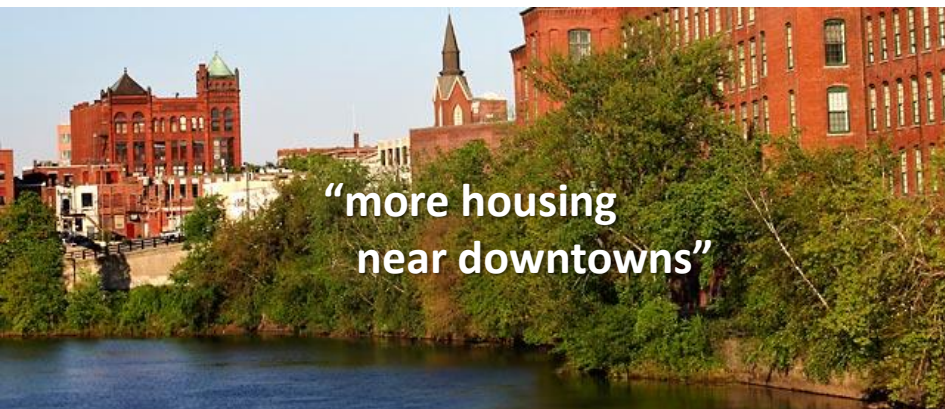
“more compact housing units”



“ensure zoning and land use codes support affordable housing”



“more housing for those in creative fields”



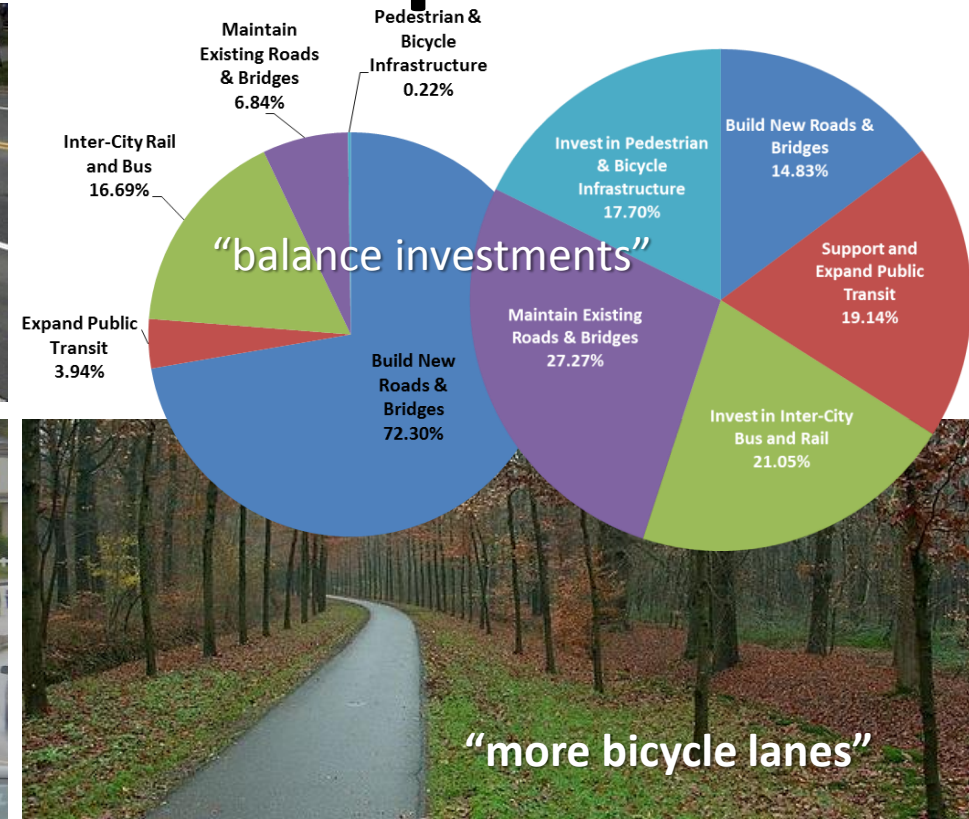
“more housing near downtowns”



“greener housing options:”



# What We've Heard: Transportation





# What We've Heard: Vitality



**“embrace  
development along waterways”**



**“a regional start-up incubator”**



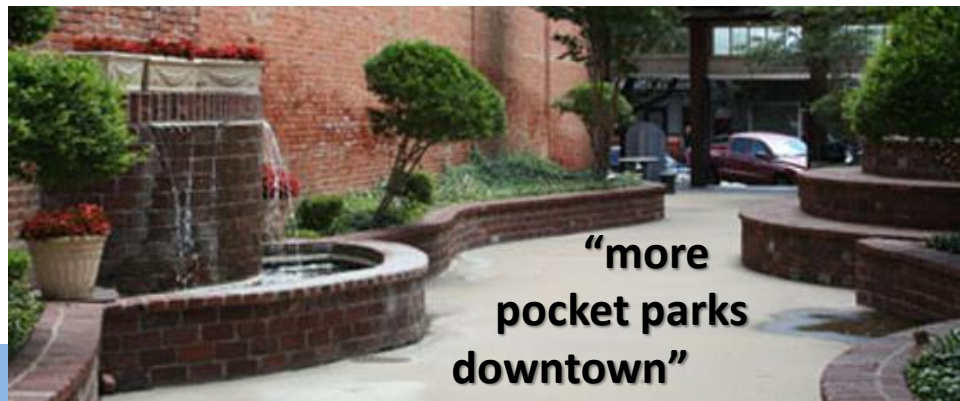
**“redevelop parking lots  
into ‘vertical’ development”**



**“commuter rail  
to Boston”**



**“more mixed-use  
development”**



**“more  
pocket parks  
downtown”**



# What We've Heard: Environment

