

# HIGHLIGHTS



## The Statewide Snapshot

Residents from all corners of New Hampshire shared their visions for the future of the state during the Granite State Future Project.

Impassioned thoughts, ideas and opinions were provided through discussion, online surveys, and written submissions. The visions they share are reflected in a suite of documents culminating in *The Statewide Snapshot*, a visual summary of the key data points are shared here.

*The Granite State Future Project represents a three year effort to look, listen and gain insight into the past, present and future of New Hampshire and the people who live and work here. The information in this document gives an overview of the themes, issues, concerns and ideas that were referenced repeatedly throughout the three-year project. \**



## Common Themes

As New Hampshire navigates into the heart of the 21st century there are both great opportunities and daunting challenges. How our great state addresses both will set the stage not only for our own future but that of our children and theirs beyond that.

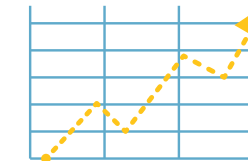
Several common themes emerged from the nine distinct regional planning efforts conducted across New Hampshire's diverse landscape.



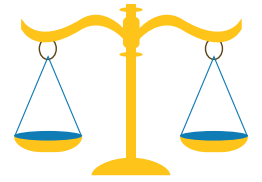
RESILIENCY



COLLABORATION



DEMOGRAPHIC  
SHIFTS



EQUITY

“ I’d like to see mixed use zoning that would allow there to be small shops mixed with reasonable housing that would allow people to live and work in this quaint village atmosphere and bring tourists to shop in our community.”

- Manchester, New Hampshire Resident

“ People are friendly, housing is nice but rent could be lower.”

- Concord, New Hampshire Resident

“ I would like to see more opportunities for small businesses and more housing choices at all price points.”

- Sutton, New Hampshire Resident

“ I love the rural area, I enjoy hiking, skiing, etc., I love the lakes, I’ve lived in the area since 1975.”

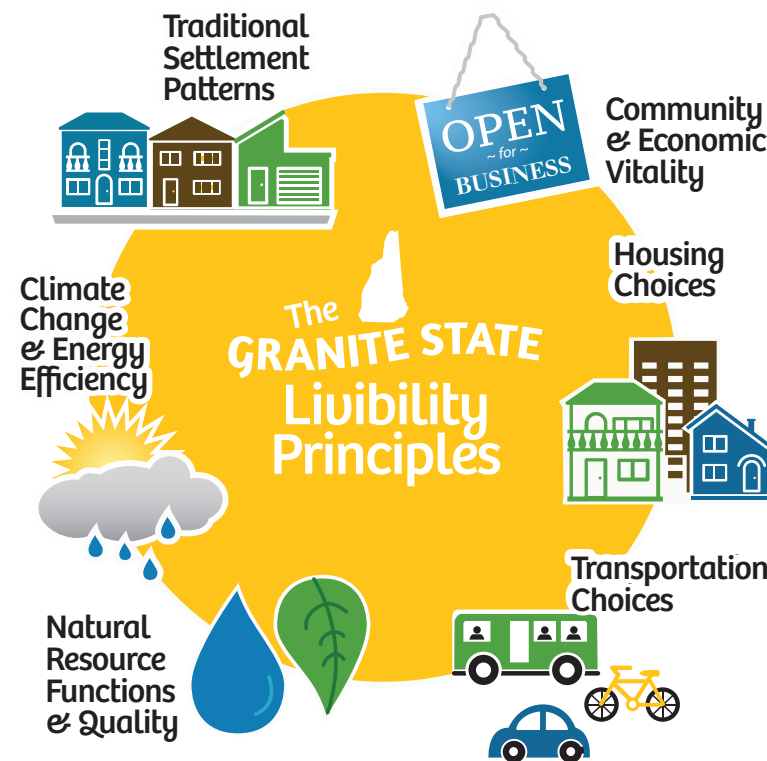
- Nelson, New Hampshire Resident

## Livability Principles

Each of the regional plans, and the *Statewide Snapshot*, utilized the *New Hampshire Livability Principles* as a common set of organizing ideas and concepts. The NH Livability Principles represent a theoretical merger of the NH Smart Growth Principles found in NH RSA 9-A, the HUD-EPA-DOT Federal Partnership Livability Principles, and the NH Municipal Master Plan, Regional Comprehensive Plan and State Development Plan required components.

The Livability Principles acknowledge that no one comprehensive plan chapter can be viewed in isolation, but that there is overlap and integration between many of the plan components. Each Livability Principle is to some degree relevant to each and every chapter of the regional plans. Each of the plans, reports, data and geographic information produced over the three year process is available online at:

[www.granitestatefuture.org/our-plans/](http://www.granitestatefuture.org/our-plans/)



New Hampshire Residents Are the Key to the State's Vitality

|   | New Hampshire | Nationally |
|---|---------------|------------|
| 2009 Peak Unemployment                          | 7%            | 10%        |
| Residents Who Hold a Bachelor's Degree          | 33%           | 28%        |
| Residents Who Have Earned a High School Diploma | 91%           | 85%        |

## Taking Action

The state is in the midst of a demographic paradigm change which is resulting in impacts to our local economies. New Hampshire benefits from its relative small size as a state where collaboration among state, regional and local governments and organizations is highly feasible.

There are four key opportunities for future action whether planning for traditional settlement patterns, housing and transportation, economic vitality, the environment, or climate change and energy efficiency that will maximize impacts while using fewer resources.



What is Important to New Hampshire?

90% SUPPORT LOCAL AGRICULTURE INITIATIVES

86% SUPPORT SAFE PLACES TO WALK AND BIKE

83% SUPPORT EXPANDING & PROMOTING BUSINESSES

96% PLACE A HIGH PRIORITY ON PROTECTING OUR WATER QUALITY

74% SUPPORT PLANS TO MAINTAIN OUR BRIDGES & HIGHWAYS

55% SUPPORT OPTIONS FOR SENIOR & SPECIAL NEEDS TRANSPORTATION

69% ARE CONCERNED ABOUT CLIMATE CHANGE AND THE POWER OUTAGES IT MAY BRING



# Progress & Success

Throughout the Statewide Snapshot document are variety of success stories of featuring communities and individuals throughout the state. Below is a sampling of those stories.

## The North Country's Changing Economic Landscape

*Self-sufficiency & independence run deep in the North Country, setting the stage of a culture and lifestyle of people who are capable of creating new local economies.*



## The Hughes Family, Hudson

*The Hughes family overcomes great challenges and moves into a new home after enrolling in the Habitat for Humanity Program.*

## Downtown Bristol Revitalization Project

*Bristol worked with its regional planning commission, the NH Department of Transportation and several federal partners to redesign roadways and pedestrian facilities downtown.*



## Regional Public Transit in New Hampshire: COAST & Jennifer Decker

*The Seacoast region's COAST offers a model for an integrated regional public transit system, and Decker ensures that the needs of disabled riders are accounted for.*

## Rimmon Heights Neighborhood Group Manchester

*A small group of neighbors from Manchester's Rimmon Heights neighborhood gathered in 2008 to brainstorm ways to strengthen their community.*



## Railroad Square Downtown Keene

*Read about the Monadnock Economic Development Corporation and its success in bringing neighborhood revitalization to downtown Keene.*

## Andrea Mannino, Milford

*Milford Hairdresser and civic leader, is thankful for Souhegan Valley Rides service which allows her to keep her independence despite life changing challenges.*



## Bohanan Farm, Hopkinton

*Thanks to broad collaboration and partnerships across the governmental and non-profit sectors, this beloved local landmark will be preserved for future generations.*

## The Claremont Comeback

*Once a declining old mill town, Downtown Claremont today bustles with new restaurants and residences, renovated riverfront mills and welcoming storefronts.*



## Elevated Sea Levels, A Rising Priority on the Seacoast

*Determined to take action, 19 organizations currently collaborate as part of the NH Coastal Adaptation Workgroup, helping seacoast communities prepare for the effects of extreme weather events.*